

SAILING INSTRUCTIONS
APPENDIX 3

APPENDIX LEG 1 - LES SABLES D'OLONNE, SANTA CRUZ de LA PALMA

6 SCHEDULE

13h52: first warning signal on Sunday September 24, 2023.

10 COURSE

Start (SI 13.2)

Offset buoy if there is (SI 10.3)

Cardinal buoy « Nouch sud » to be left on starboard

Cardinal buoy « les Petites Barges » to be left on starboard

Cape Finisterre TSS to be left on port

Lisboa TSS to be left on port

Cape St Vincent TSS to be left on port

Finish off Santa Cruz de la Palma (See 14.1 of the present appendix)

11 MARKS

Starting mark will be a **Red** inflatable buoy (VSM)

Offset mark will be a **Yellow** inflatable buoy

Finish mark will be a **Yellow** buoy (there will be a strobe light on this buoy by night)

12 AREAS THAT ARE OBSTRUCTIONS

TSS	Reference points	Coordinates
Cape Finisterre	1 (NW)	43° 31.4N - 10° 05.15W
	2 (NE)	43° 20.5N - 09° 36.2W -
	3 (W)	43° 18.6N - 10° 13.7W
	4 (E)	43° 10.3N - 09° 42.9W
	5 (SW)	42° 52.9N - 10° 13.7W
	6 (SE)	42° 52.9N - 09° 42.5W
Lisboa	1 (NW)	38° 52N - 10° 13.7W
	2 (NE)	38° 51.7N - 09° 44.4W
	3 (W)	38° 41.0N - 10° 13.7W
	5 (SW)	38° 34.0N - 10° 11.6W
	6 (SE)	38° 38.6N - 09° 43.0W
	Cape Saint Vincent	1 (NW)
2 (NE)		37°02.6N - 09° 12.0W
3 (ENE)		36°56.5N - 09° 10.5W
4 (E)		36°51.8N - 09° 04.9W
5 (E)		36°49.7N - 08° 57.2W
6 (S)		36°24.6N - 09°05.4W
7 (SSW)		36°28.2N - 09°21.4W
8 (W)		36°44.0N - 09°39.5W

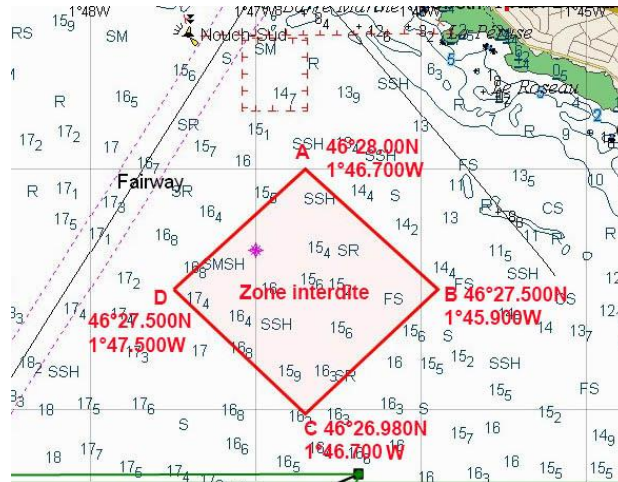
13 START
Starting area

A buoy 46°28.00N
1°46.700 W

B Buoy 46°27.50N
1°45.900 W

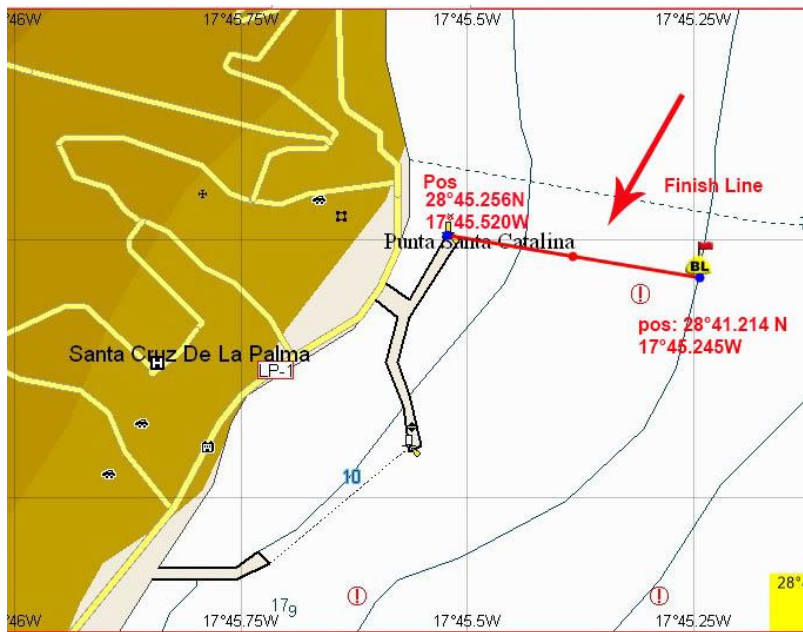
C buoy 46°26.980 N
1°46.700 W

D buoy 46°27.500 N
1°47.500 W



14.1 FINISH

Finish line will be between the light house of Punta Santa Catalina (pos. 28°41.256N ; 17°45.520W) to be left on starboard and a yellow inflatable buoy (pos 28°41.214N ; 17°45.245W) to be left on port.



Finish line	Finish buoy
--------------------	--------------------

17.2 Forms to request hearing will be at the Race Office in Santa Cruz.

17.3 Jury room will be at the Race Office in Santa Cruz.

19.1 A declaration of start will serve as signing. This declaration will be handed over during the #5 briefing (weather

24 Identification of the official boats:
 - Security : "Red" flag
 - Press and passenger boats: flag « La Boulangère Mini Transat »

REMINDER : **Skippers/Boats must be in race configuration from 8h30**
Towing out will begin at 9h30